

CHRISTMAS 2012

Better  
Homes  
and Gardens



# sandcastle sanctuary

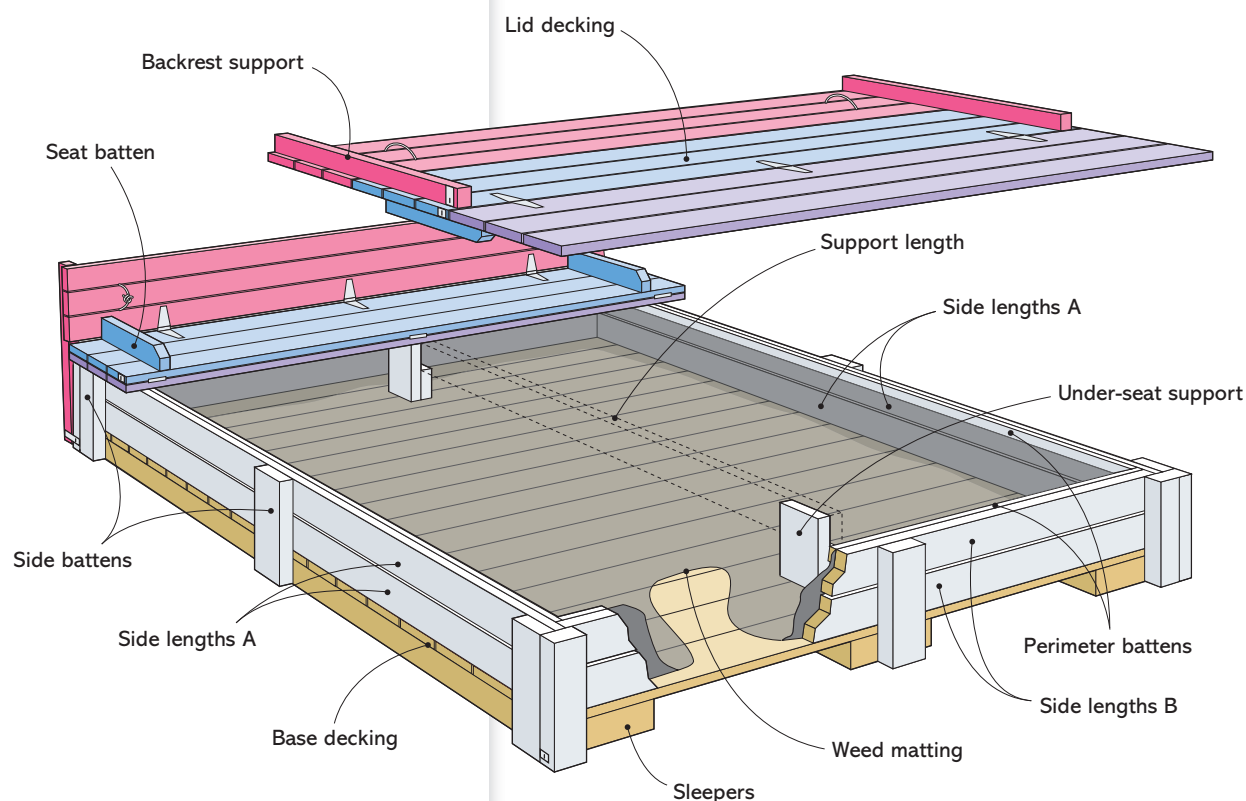
A sandpit so cool – you'll want to build it!



This project's just the thing if you have kids and a large backyard. It's a self-contained sandpit with a lid that doubles as two seats when open and becomes a lounging deck when closed. And, because the sandpit has a lid, it's protected from falling leaves and debris, as well as from toilet stops by local animals. Even more good news – you won't have to dig a whopping big hole and fill it in down the track. ►

**1. It'll be hard** to get the kids to come in for dinner with this play area. A sandpit with seating and a nifty deck – all in one neat package.

## Sandpit Seat Diagram



### Sandpit seat

#### GATHER YOUR SUPPLIES

##### Base

- Sleepers (3) 200 x 50 x 1662mm  
H4 treated pine
- Base decking (17) 90 x 22 x 1469mm  
LOSP

##### Sides

- Side battens (12) 90 x 45 x 264mm LOSP
- Side lengths A (4) 90 x 22 x 1620mm LOSP
- Side lengths B (4) 90 x 22 x 1470mm LOSP

##### Lid

- Lid decking (18) 90 x 22 x 1600mm LOSP
- Backrest supports (4) 90 x 45 x 590mm  
LOSP
- Seat battens (4) 90 x 45 x 290mm LOSP

#### YOU'LL ALSO NEED

90 x 45 x 1500mm LOSP and 90 x 45 x 1800mm LOSP for perimeter battens; 90 x 45mm LOSP offcuts, to suit, for under-seat supports; 90 x 45 x 1600mm LOSP for support length; 40mm and 75mm external timber screws; Dulux Weathershield Low Sheen in Vivid White, Design Delight (purple), Boyzone (blue), Licked Lick (pink); painting tools; 1.83 x 5m roll weed matting; power saw; compound saw; staple gun; utility knife; strap hinges and screws, to suit (12); hasps and staples (2 latches and 4 eyes); padlocks (2); rope for handles; sand ►



**2. When the lid is closed,** you can lock it into position. Throw on a few outdoor cushions, pop up an umbrella and you have a mini deck for chilling out or a colourful stage for backyard performances.



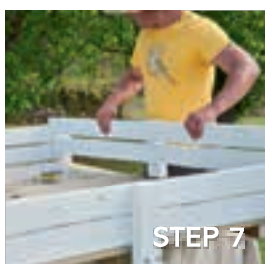


3

**3. By fitting a hasp and staple** to each side of the sandpit, you can use a padlock to secure it in an open or closed position.



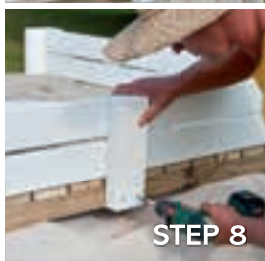
STEP 2



STEP 7



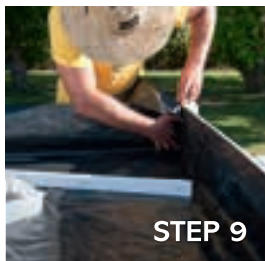
STEP 3



STEP 8



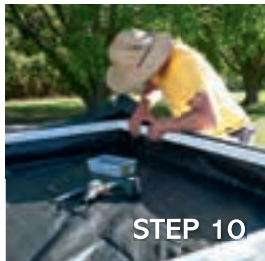
STEP 4



STEP 9



STEP 5



STEP 10



STEP 6



STEP 11

## Sandpit seat

### HERE'S HOW

**STEP 1** Cut all components to size with power saw. Leave base components unpainted. Paint side components in white. From lid components, paint 6 decking lengths in blue, 6 in pink and 6 in purple. Paint backrest supports in pink and seat battens in blue. Allow all painting to dry.

**STEP 2** Starting with base, lay out sleepers, evenly spaced apart. Lay 2 lengths of decking flush with each end. Check for square by measuring diagonals and adjust, if necessary, so measurements are equal in each direction.

**STEP 3** Predrill, then fix 1 decking length to each end of sleepers, using two 40mm screws. Then evenly space remaining 15 lengths of decking across sleepers and fix with two 40mm screws at each end.

**STEP 4** To make sides, butt-join 2 side battens, predrill and drive in two 75mm screws to join. You need 4 corner assemblies.

**STEP 5** Make long sides first. Take 2 side lengths A and screw-fix 1 flush to top of each corner assembly. Allow a 3mm gap, then screw-fix second length. Position a side batten in centre and screw together. Repeat for remaining long side.

**STEP 6** Position, predrill, then fix both sides (made in Step 4) to base with 75mm screws.

**STEP 7** Screw-fix 2 side lengths B to a centred side batten, allowing a 3mm gap. Predrill holes at each end, then slot side in position on base.

**STEP 8** Check top is flush, then drive in screws at each corner to attach sides to corners. Predrill and screw through side batten to fix to base. Repeat for remaining short side.

**STEP 9** Roll out weed matting to cover base and up sides. You'll need to overlap it to get suitable coverage and fold it neatly at corners. Use a staple gun to tack matting in position. It's okay to leave some overlap at sides, as you can trim it off later.

**STEP 10** To keep matting in position, rip perimeter battens in half through centre to give 4 lengths. Trim to size, if needed. Paint white and allow to dry. Predrill, position 10mm from top of sides and screw in position.

**STEP 11** Trim matting flush with top of battens with utility knife.

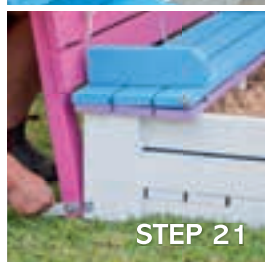
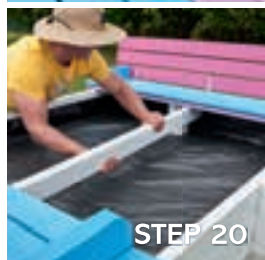
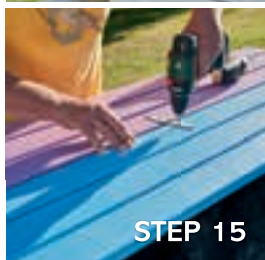
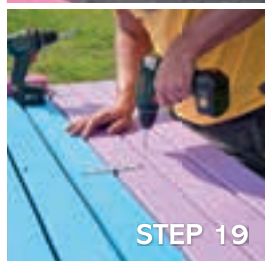
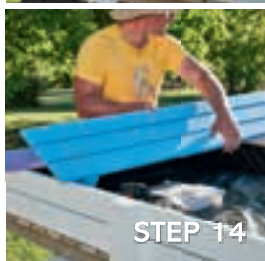
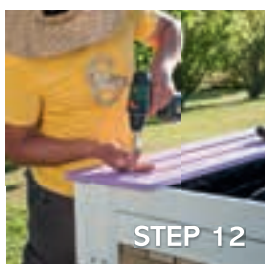
**STEP 12** Position all 18 lengths of lid decking across long lengths to determine required spacing. Note spacing distance, then remove decking. Position 3 purple lid decking lengths, ►

*This versatile little sandpit will keep the kids amused all day!*





**4. Rope handles tied through the back** of each seat make it easier to move the lid from an open upright position to a closed position.



reeded-face down, centred to short side of frame and flush with outside of corner battens. Predrill, then screw-fix decking to sides. Repeat to fix 3 remaining purple lid decking lengths to other side.

**STEP 13** Cut angle off 1 end of 1 seat batten by marking 30mm down from 1 face of seat batten and cutting off a 45° angle using compound saw. Touch up with paint, as necessary. Repeat for remaining 3 seat battens.

**STEP 14** Assemble blue components. Measure internal length of sandpit and lay out 2 seat battens so they sit within this distance. Position, predrill and screw-fix 3 lid decking lengths to seat battens. Slot assembly in position so cut angle of seat battens is facing purple components. Repeat to fix 3 remaining blue lid decking lengths to other side.

**STEP 15** Fix blue decking assembly to purple assembly, with an even spread of 3 hinges. Allow for space between decking components. Repeat on other side.

**STEP 16** Lay out 2 backrest supports, 90mm face up. Measure external length of short side and lay backrest supports at this length. Fix 1 pink lid decking length, reeded-face up, flush with ends of backrest supports. Then fix remaining pink lid decking lengths. Repeat to make a second pink assembly.

**STEP 17** Hold pink assembly in an upright open position and prop on chock of suitable width (slightly larger than hinge barrel), then screw-fix together with 1 hinge at centre and 1 at each internal side of seat battens. Drive in 1 screw at each side of hinges first. Test lid opens and closes and adjust, if necessary. Drive in remaining screws. Repeat for other side.

**STEP 18** To make under-seat support, measure distance from top of base to underside of seat. Cut a 90 x 45mm offcut to this height and another 90mm shorter. Paint in white. Allow to dry, then screw-fix together with ends flush. Slot into a centred position below middle of purple assembly. Repeat for other side.

**STEP 19** In closed position, predrill through top of purple assembly into under-seat support and screw-fix. Repeat for other side and fix so it's a mirror image with notches lining up.

**STEP 20** Position 90 x 45 x 1600mm support length on notches, trimming, if necessary. Paint length in white. Allow to dry, then rest in position. This removable length sits on the notches created by under-seat supports and will support lid when it's in a closed position.

**STEP 21** In open position, fix a latch to base of backrest support near ground. Fix eye to corresponding point on corner assembly of side. Close lid and attach eye to end of lid decking where latch makes contact. Repeat for other side.

**STEP 22** Cut 4 lengths of rope to make handles. These are positioned on each side of backrests around centre length of decking. Just thread rope through gap in decking and tie a double knot for each handle.

**STEP 23** Paint sides of base white and touch up any paintwork, as necessary. Allow to dry. Fill the pit with sand, then call in the kids.

**Stockists:** Timber and hardware supplies. Coolaroo Weedmat, 1.83 x 5m roll, **Bunnings Warehouse, (03) 8831 9777** or [bunnings.com.au](http://bunnings.com.au) Dulux Weathershield Low Sheen in Vivid White (white), Design Delight (purple), Boyzone (blue) and Licked Lick (pink), **Dulux, 13 25 25** or [dulux.com.au](http://dulux.com.au) Mika heart tray/set of 2, \$36.95, **Domayne, (02) 9201 6111** or [domayne.com.au](http://domayne.com.au)

Photography John Halfhide; styling Jacqui Pix; diagram Stephen Pollitt; project John Rae

